



MONTHLY MEMBERSHIP PROGRESS REPORT

District 2 S5

Results as of: 5/31/2015

GMT: HAL GRIFFIN

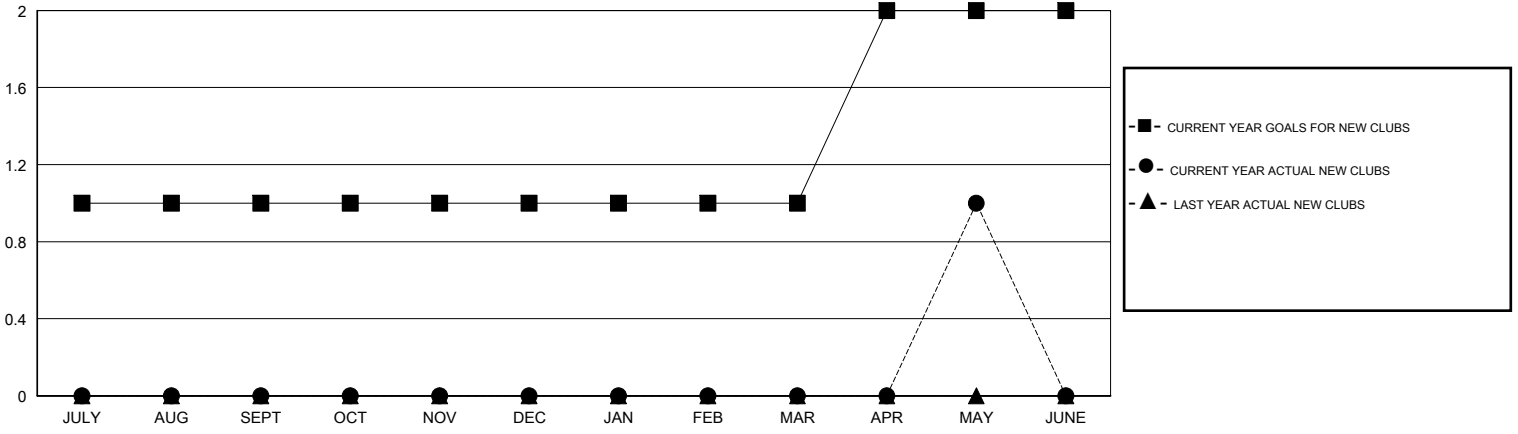
LOCATION TEXAS

GMT CA 1

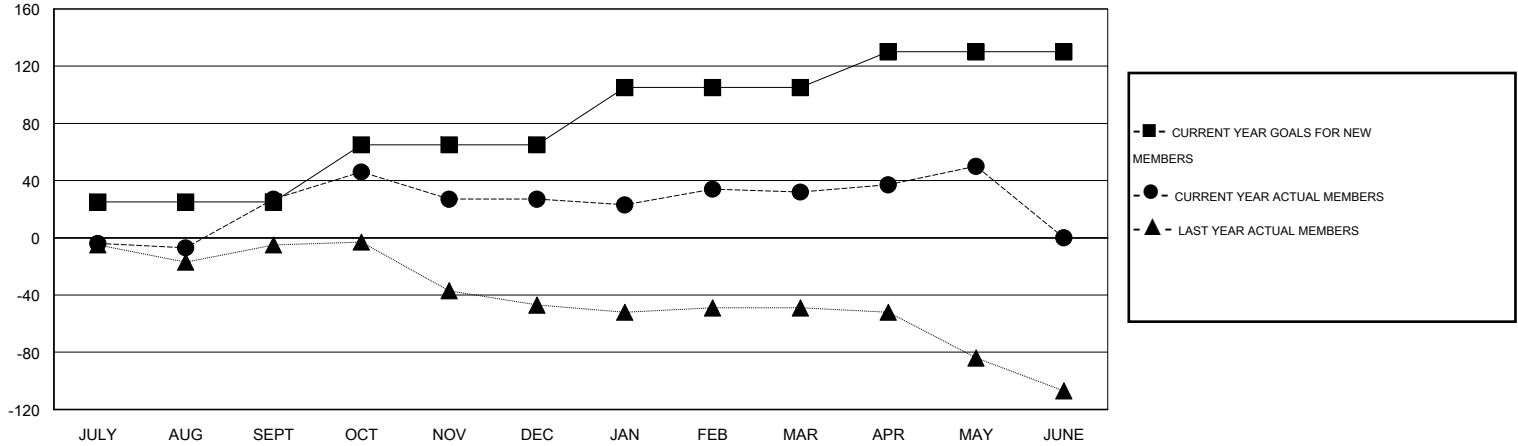
Clubs				
RESULTS FOR 2014-2015				
QUARTER	NEW CLUB GOAL	NEW CLUBS	DROPPED CLUBS	NET GAIN/LOSS
JULY/AUG/SEPT	1	0	0	0
OCT/NOV/DEC	0	0	0	0
JAN/FEB/MAR	0	0	0	0
APR/MAY/JUNE	1	1	0	1

Members				
RESULTS FOR 2014-2015				
QUARTER	NEW MEMBER GOAL	CHARTER AND NEW MEMBERS ADDED	DROPPED MEMBERS	NET GAIN/LOSS
JULY/AUG/SEPT	25	90	63	27
OCT/NOV/DEC	40	70	70	0
JAN/FEB/MAR	40	86	81	5
APR/MAY/JUNE	25	70	52	18

GOALS AND ACTUAL NEW CLUBS CUMULATIVE



GOALS AND ACTUAL MEMBERS CUMULATIVE



DROPPED CLUBS: 0

48 CLUBS OF 60 ADDED 1 OR MORE NEW MEMBERS

GENDER DISTRIBUTION	
MALE	1,509 (67.94%)
FEMALE	712 (32.06%)

DROPPED MEMBERS	
DECEASED	25
CLUB CANCELLED	0
OTHER	241
TOTAL	266

[CLICK HERE FOR HEALTH ASSESSMENT DATA](#)

FAMILY UNIT MEMBERS	302
HEAD OF HOUSEHOLD	149
NON-HEAD OF HOUSEHOLD	153